

SHORT TERM QUOTATION FOR MANUFACTURE, SUPPLY AND ERECTION OF CABLE DUCT COVERS OF SIZE: 1220mm x 615mm x 20mm THICK AT DEEPANJALINAGAR AND MYSORE ROAD METRO STATIONS OF REACH-2.

Bangalore Metro rail Corporation Ltd., (BMRCL) a joint Venture of Government of Karnataka and Government of India, Limited invites sealed quotations from eligible agencies for Manufacture, Supply and Erection of cable duct covers of Size: 1220mm x 615mm x 20mm thick. (as per the drawings enclosed) in reach-2 stations.

Details of Quotation are as under:

Schedule –‘A’

No	Description of the Item	Unit	Quantity	Rate in figures	Rate in words	Amount in words
	Manufacture, Supply and Erection of cable duct covers. Size: 1220mm x 615mm x 20mm thick. (as per the drawings enclosed) with locking arrangement, as shown in the drawing Materials: Fiber Cement Board 20mm thick, density 950 kgms. Painting Fiber Cement Board will be applied with 2 coats of primer and 2 coats of grey colour paint. The edges will be coated with elastomeric rubber paint for edge protection	Nos	554.00			
	Total					
Note:- The Rate to be quoted by the bidder is inclusive of removing the existing cable duct covers(in the existing condition),stacking and handing over to the concerned BMRCL section.						

Completion Period: - 60 days from the date of issue of work order.

I Eligibility Criteria for Bidders:

1) The bidder should have knowledge of work as mentioned above.

II. Terms and Conditions

1) The bidder has to quote the offer rate for item in schedule –‘A’.

e. llaw 2

- 2) Rates to be quoted inclusive of all taxes and other statutory levies as applicable.
- 3) Each bidder must submit only one quotation.
- 4) Self attested copies of VAT registration and IT PAN should be enclosed with the quotation.
- 5) The selection of the bidder will be on the basis of overall lowest Rate / amount.

III. Conditions for Award of Contract:

- 1) The work shall be awarded to the bidder whose quotation is considered to be substantially responsive and who has offered the lowest Rate / amount.
- 2) Notwithstanding the above, the Company reserves the right to accept or reject any quotation or to cancel the bidding process and reject any quotations at any time prior to the award of contract, without assigning any reasons.
- 3) The quantities indicated in the Schedule are approximate.

- IV.**
1. **Safety:** Bidders shall ensure all safety measures during the execution of the work by providing safety equipments to their labours strictly as per BMRCL, standards. Necessary insurance coverage for the labours to be deployed for the work shall be arranged by the bidder.

The work shall be carried out during the night hours (non-operation hours) only and bidder have to arrange the work accordingly. Necessary permission from the O&M wing/BMRCL will be obtained by this office for the purpose.

2. **Completion period:** The work shall be completed in all respects within 60 days from the date of issue of work order. The defect liability period will be 180 days from the certified date of completion. If any defects observed during this period, bidder shall rectify the same at bidder risk and cost. The work shall be as per the specifications mentioned in the work order and as instructed by the Engineer – in – charge.
3. **Payment terms:** No advance will be paid during the course of work. Payment will be made only upon successful completion of the work and submission of bill by the bidder. The rate shall be inclusive of work contract tax, TDS, and labour cess and /or any other additional expenses that bidder may incur during the execution of the work. Further, a sum equivalent to 10% of the bill amount will be deducted from bidders bill towards security deposit, which will be released after the successful completion of the defect liability period. Please produce copy of PAN card before claiming payment.
4. **Others:** Necessary arrangements for power supply shall be arranged at bidder end. BMRCL is not responsible for the same.
5. BMRCL will arrange for site inspection to know the type of material and method of fixing of cable duct covers to the interested bidder who wants to submit their



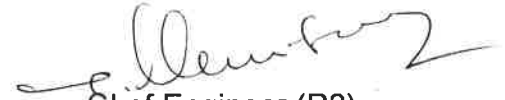
quotation. In this regard the bidder may contact the under signed at BMRCL,ETU Building, Peenya Depot,

Blank quotation forms can be downloaded from the Company website www.bmrc.co.in or can be obtained from the office of the Chief Engineer (Reach-2) , Bangalore Metro rail Corporation Ltd, 3rd floor, BMTC Complex , Shanthinagar, Bangalore – 560 027 at free of cost.

The quotation should be super scribed "**MANUFACTURE, SUPPLY AND ERECTION OF CABLE DUCT COVERS OF SIZE: 1220mm x 615mm x 20mm THICK AT DEEPANJALINAGAR AND MYSORE ROAD METRO STATIONS OF REACH-2**"

The last date of receipt of quotations is 30.06.2016 up to 3 PM. The quotations will be opened on the same day at 3.30 PM at BMRCL head office and the bidder may depute his authorized representative to be present at time of opening of the quotations.

For further clarification if any, the bidder may contact the under signed on any working day. Sealed quotations should be addressed to the Chief Engineer (Reach-2), Bangalore Metro rail Corporation Ltd, 3rd floor, BMTC Complex , Shanthinagar, Bangalore – 560 027.



Chief Engineer (R2)
BMRCL

Name of work: MANUFACTURE, SUPPLY AND ERECTION OF CABLE DUCT COVERS OF SIZE: 1220mm x 615mm x 20mm THICK AT DEEPANJALINAGAR AND MYSORE ROAD METRO STATIONS OF REACH-2” .

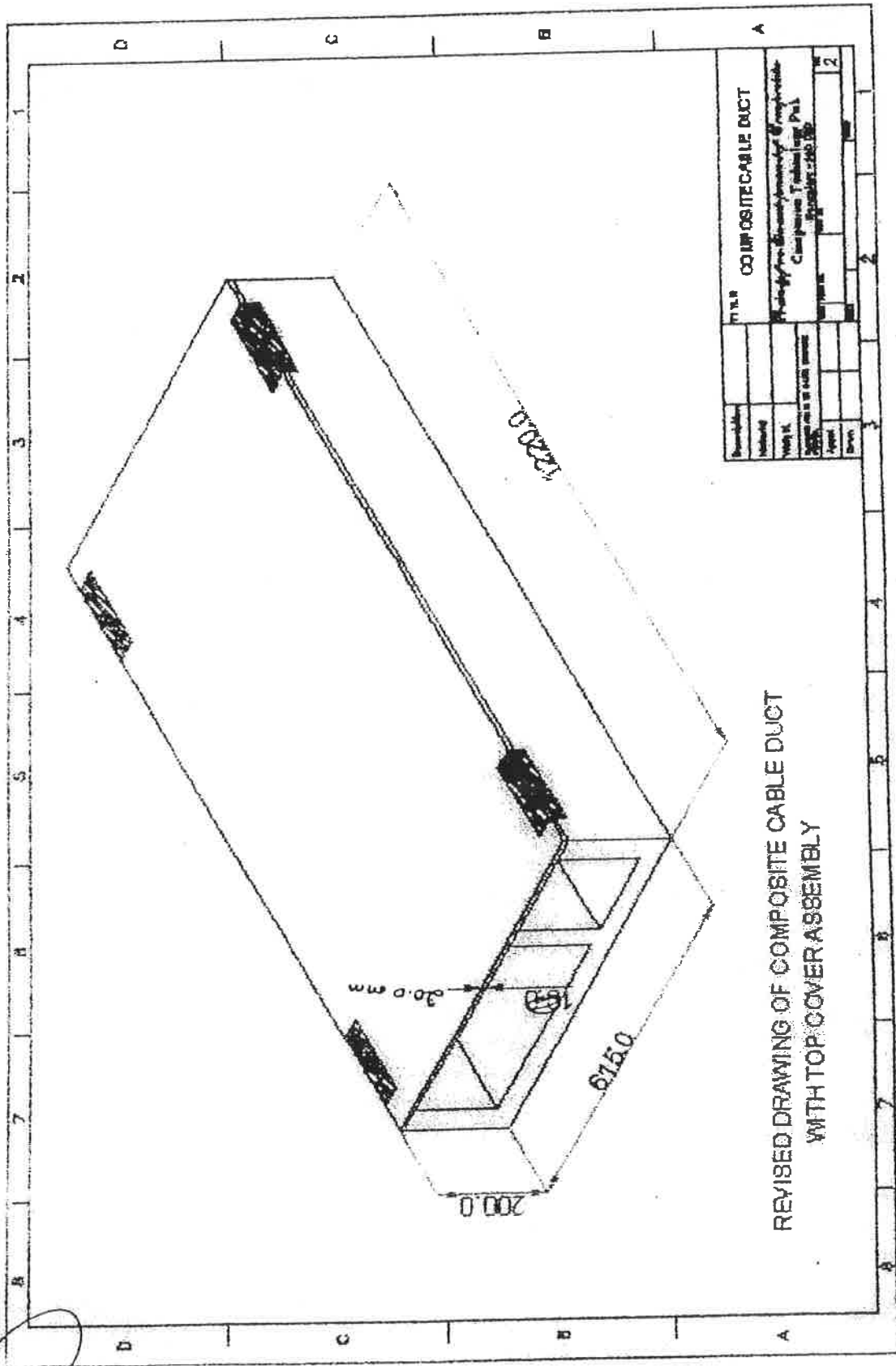
Schedule –‘A’

No	Description of the Item	Unit	Quantity	Rate in figures	Rate in words	Amount in words
	<p>Manufacture, Supply and Erection of cable duct covers. Size: 1220mm x 615mm x 20mm thick. (as per the drawings enclosed) with locking arrangement, as shown in the drawing</p> <p>Materials: Fiber Cement Board 20mm thick, density 950 kgms.</p> <p>Painting Fiber Cement Board will be applied with 2 coats of primer and 2 coats of grey colour paint. The edges will be coated with elastomeric rubber paint for edge protection</p>	Nos	554.00			
	Total Amount in Indian Rupees					
	Bidder has to quote the rate for the above item in figures and words					

Note:- The Rate to be quoted by the bidder is inclusive of removing the existing cable duct covers (in the existing condition), stacking and handing over to the concerned BMRCL section.

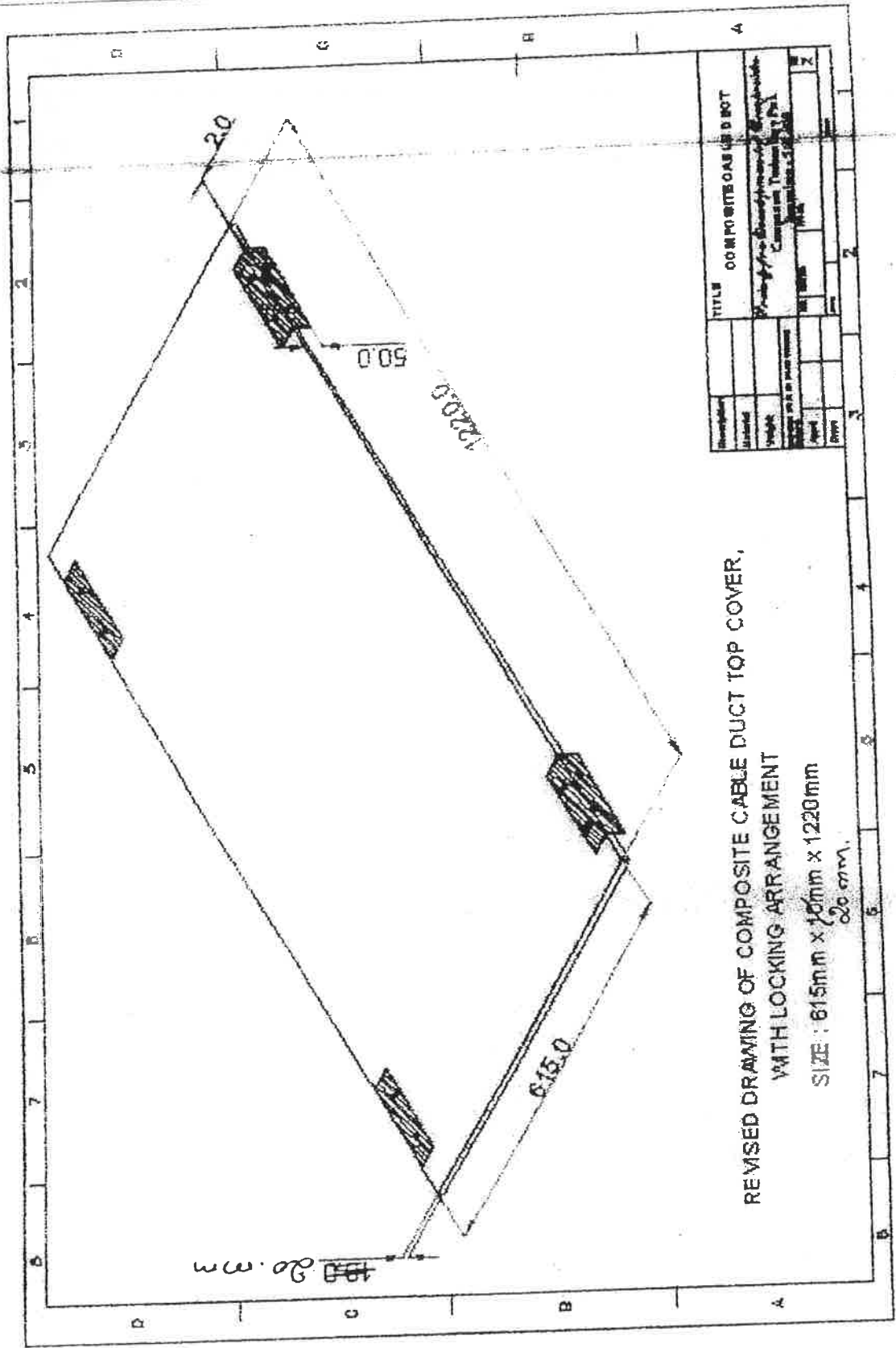


18



REVISED DRAWING OF COMPOSITE CABLE DUCT WITH TOP COVER ASSEMBLY

[Signature]



Drawn by		TITLE	COMPOSITE CABLE DUCT
Checked		Project	Composite Cable Duct
Weight		Company	Composite Cable Duct
Scale		Scale	1:1
Date		Sheet	1 of 1
Drawn by		Drawn by	
Checked		Checked	

REVISED DRAWING OF COMPOSITE CABLE DUCT TOP COVER,
 WITH LOCKING ARRANGEMENT
 SIZE : 615mm x 1220mm x 20mm.

19

